



Travel during an election - Staff



Am I able to undertake travel during an election period at Commonwealth expense?

As an employee (*Member of Parliament Staff Act 1984 (MOP(S) Act)*) of a current parliamentarian seeking re-election at the upcoming Federal election, noting that Parliament has been dissolved, what are the considerations when undertaking travel?

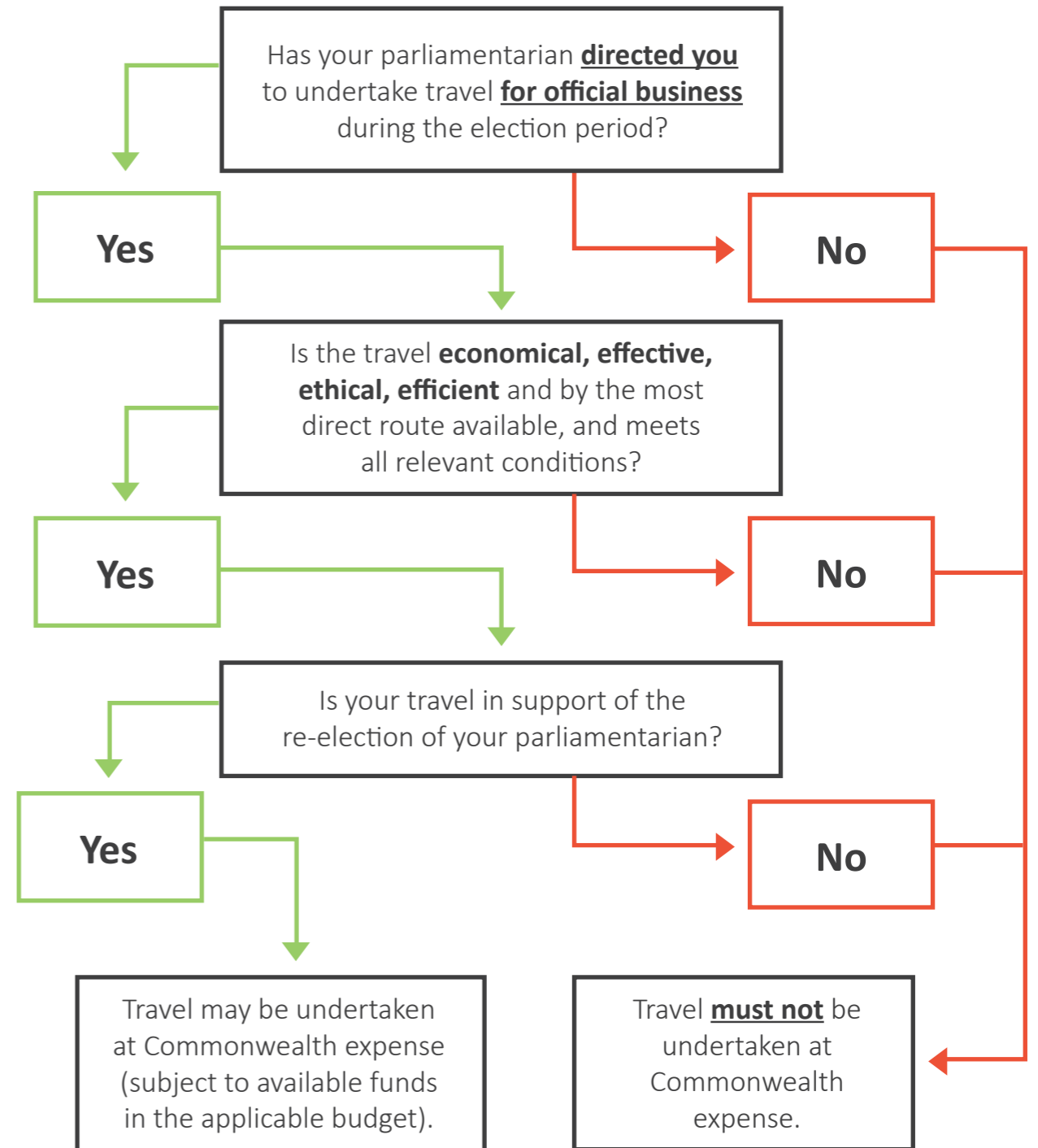
- I can only be directed to travel by my parliamentarian.
- I can only be directed to travel to undertake official business.
- Travel must be in accordance with *Determination 2018/30: Staff Travel and Relief Staff Arrangements* which is available at www.ipea.gov.au.

Employee considerations:

- The *Commonwealth Members of Parliament Staff Enterprise Agreement 2016-19* guidelines state that travel at Commonwealth expense must be economical, effective, efficient and ethical.
- Any travel is subject to the conditions of your employment including whether you are an electorate or personal employee, the office you are employed in (Backbencher or Office holder), the class of travel you can access, limitations on personal travel en-route etc.
- Travel can be to assist your parliamentarian in seeking re-election, and is considered official business (noting that travel generally cannot be undertaken at Commonwealth expense for the purpose of supporting the election of others at the Federal election).
- Travel can be to work at campaign headquarters if your parliamentarian determines that it is assisting them in their re-election and is therefore considered official business (subject to applicable travel budgets).

IPEA considerations:

- Personal advice can be sought from IPEA when considering travel at Commonwealth expense.
- Providing IPEA with all of the facts and information relating to the travel will assist in providing definitive advice.
- When accessing travel related work expenses, IPEA refers to the *Commonwealth Members of Parliament Staff Enterprise Agreement 2016-19*, Agreement Guidelines and SMOS Determination 2018/30. You must comply with the detailed conditions and legislative obligations in these documents.



More specific scenarios are available on the IPEA website (www.ipea.gov.au).

IPEA is available to provide advice to Parliamentarians and their staff on travel on 02 6215 3000 or enquiries@ipea.gov.au