



# Travel during an election - Staff



Australian Government  
Independent Parliamentary  
Expenses Authority



## Am I able to undertake travel during an election period at Commonwealth expense?

As an employee (*Member of Parliament Staff Act 1984 (MOP(S) Act)*) of a current Member of Parliament seeking re-election at the upcoming Federal election, noting that Parliament has been dissolved, what are should I consider when undertaking travel?

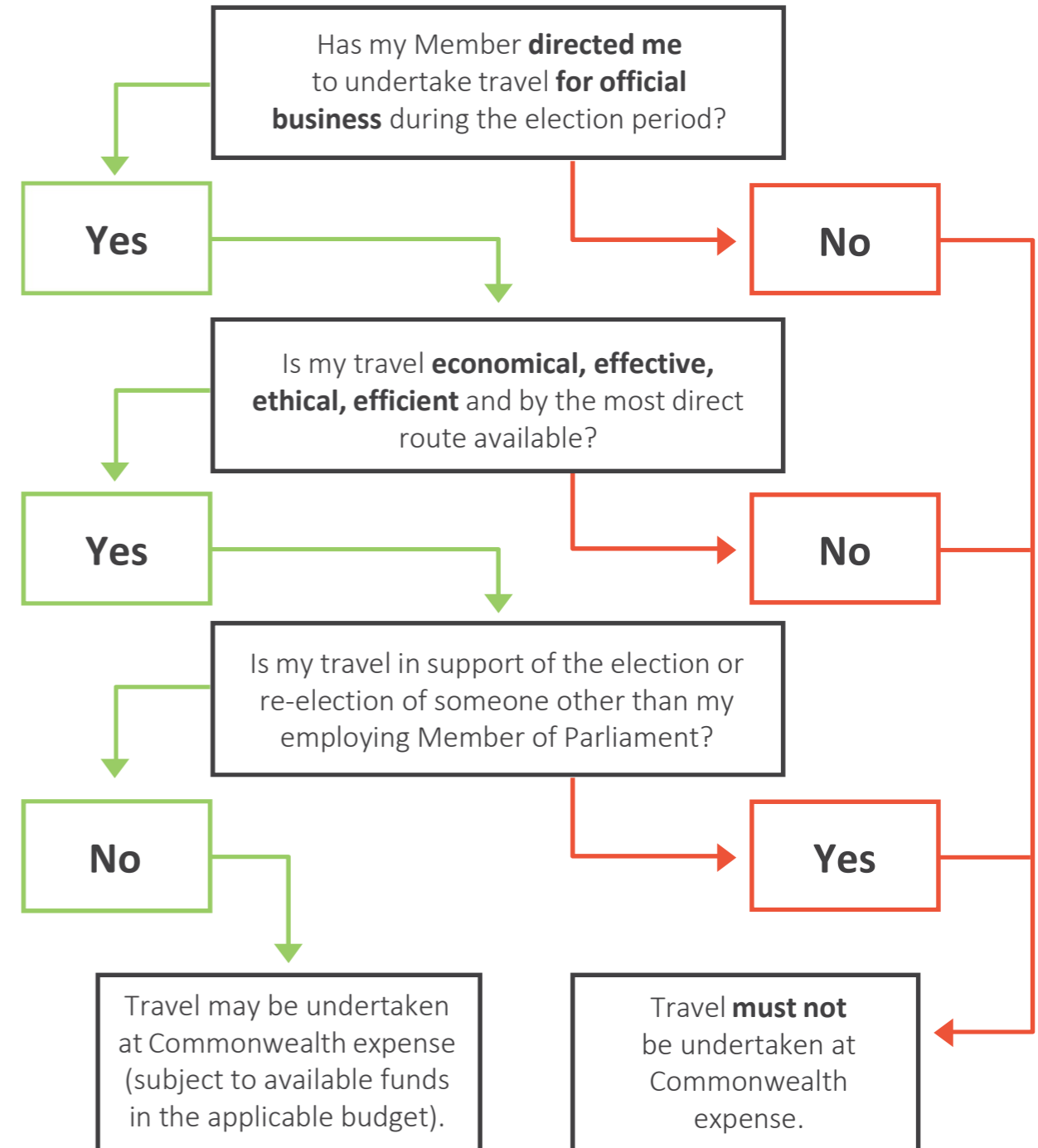
- I can only be directed to travel by my employing Member of Parliament.
- I can only be directed to travel to undertake official business to support my employing Member of Parliament.
- My travel must be in accordance with *Determination 2020/15: Staff Travel and Relief Staff Arrangements*. This determination is available at [www.ipea.gov.au](http://www.ipea.gov.au).

### Employee considerations:

- The *Commonwealth Members of Parliament Staff Enterprise Agreement 2020-23* guidelines state that travel at Commonwealth expense must be economical, effective, efficient and ethical.
- Any travel is subject to the conditions of my employment including whether I am an electorate or personal employee, the office in which I am employed (Backbencher or Office holder), the class of travel I can access, limitations on personal travel en-route etc.
- Travel can be to assist my employing Member of Parliament in seeking re-election, and is considered official business
- Travel generally cannot be undertaken at Commonwealth expense for the purpose of supporting the election of other party candidates.
- Travel can be to work at campaign headquarters if my employing Member determines this will assist them in their re-election and is therefore official business (subject to travel budgets).

### IPEA considerations:

- IPEA can provide personal advice prior to commencing travel at Commonwealth expense.
- Providing IPEA with all of the facts and information relating to the travel will assist in providing definitive advice.
- When accessing travel related work expenses, IPEA refers to the *Commonwealth Members of Parliament Staff Enterprise Agreement 2020-23*, *Agreement Guidelines* and *SMOS Determination 2020/15*. Employees must comply with the detailed conditions and legislative obligations in these documents.



Information about the travel framework is available on the IPEA website ([www.ipea.gov.au](http://www.ipea.gov.au))

IPEA is available to provide advice to Members of Parliament and their staff on travel on 02 6215 3000 or [enquiries@ipea.gov.au](mailto:enquiries@ipea.gov.au)